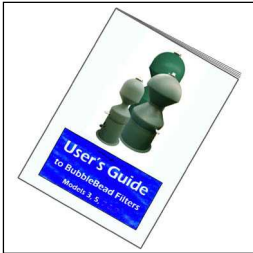
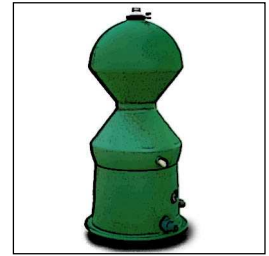


BubbleBead Filter

Quick Reference Guide

Models 1.5, 3, 5, 7, 9 with Hydraulic Valve

Congratulations on the purchase of your BubbleBead Filter which is designed to give you optimal clarity and health in your pond system. The filter is straightforward to use but care is required during the installation procedure for the correct operation of the filter and the best overall results.



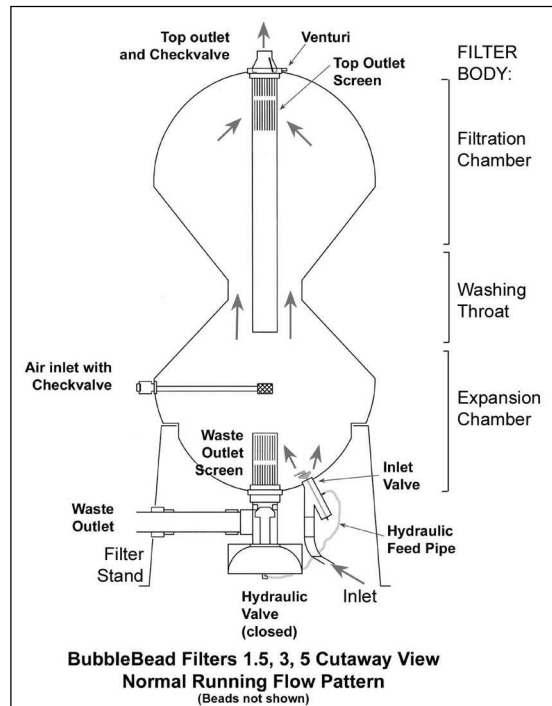
This quick reference guide is not intended to replace your **User's Guide** which carries full details on the installation and operation of your filter. It is important that you refer to this when necessary. In this quick guide the ➤ symbol directs you to the appropriate pages in the full **User's Guide**

Getting Started

This diagram shows the various parts of a typical BubbleBead Filter (Hydraulic Valve Range). The exact shape will vary between models.

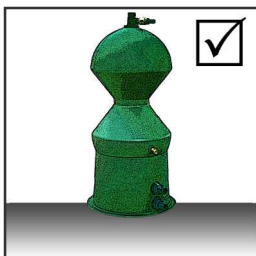
Check that all the necessary parts (➤ page 7) have been received before continuing.

➤ See pages 6 and 23 in your **User's Guide** for a full outline of how the filter system works in normal use.

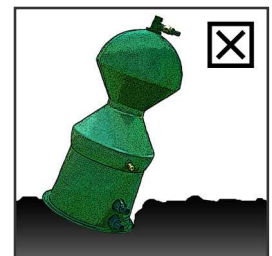


Siting the Filter

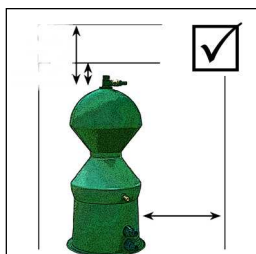
➤ see pages 4 & 5 in the User's Guide



DO mount the filter on a firm, level base



DON'T mount on soft, unstable or unlevelled ground

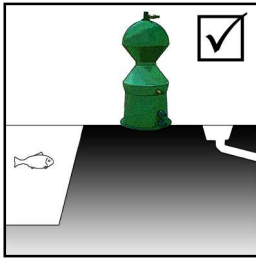


DO leave some access space for maintaining the filter

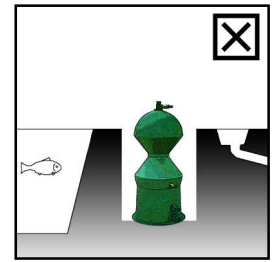


DON'T fit the filter where future access will be difficult or impossible

Siting the Filter (cont.)



DO mount the filter above pond level and wherever possible, above drains/soakaways.

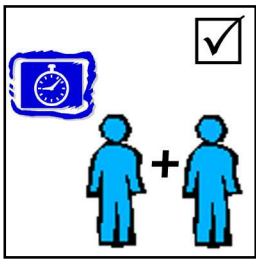


DON'T bury the filter.
Hydraulic Valve units will NOT function correctly if positioned below adjacent pond level.
Don't position below drains unless unavoidable.

Where siting below drains is necessary, ➤ see page 4

Assembling the Filter

➤ The steps to assembling your filter are described on pages 7 to 15 in your User's Guide

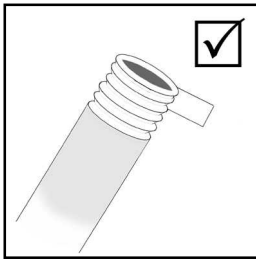


DO allow sufficient time and do get assistance to move the filter

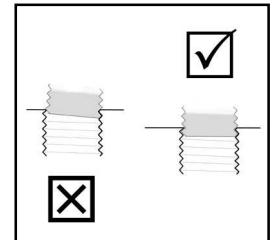


DON'T rush the assembly, or parts could become damaged, and don't attempt to lift heavier items on your own

General Plumbing



DO use sufficient PTFE tape on all threads
DO initially tighten fittings only by hand to ensure that threads are not damaged, and only tighten further by hand, or using a soft belt wrench, or using a tool on the hexagon section

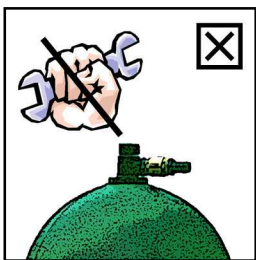


DON'T cross-thread the fittings

DO position the male fittings evenly in the holes, square-on and not at an angle.
Turn anti-clockwise one turn to settle into place before screwing into position.

➤ See plumbing tips on pages 8, 9 & 17.

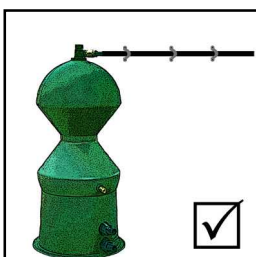
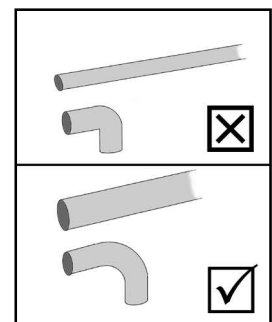
Inlet and Outlet Plumbing



DON'T over-tighten the fittings
DON'T use levers to tighten fittings - you could crack them!

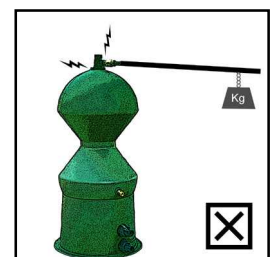
DON'T use narrow pipes and avoid tight bends and outlet restrictions (➤ page 48)
DO use swept bends, large bore hose and pipe
DO give PVC glue ample time to set

TIP: 1 1/2" hose allows over two and a half times the flow of 1" hose



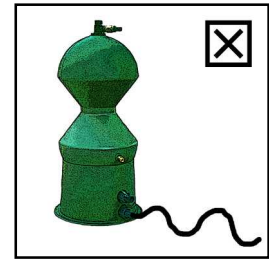
DO support pipework - use clips to hold pipes in place against walls etc.

DON'T allow pipework to put strain on the filter

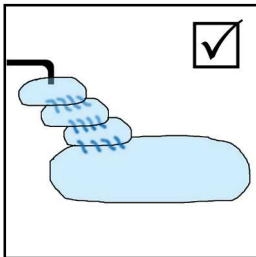




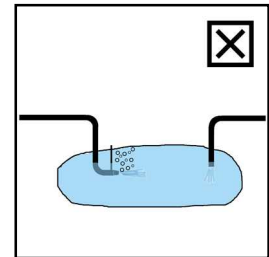
DO use straight, large bore pipework on the waste outlet



DON'T use undulating or narrow pipes



DO encourage aeration
- feed return water down cascades
- use an air-pump to feed airstones in the pond (but keep airstones away from the filter intake).



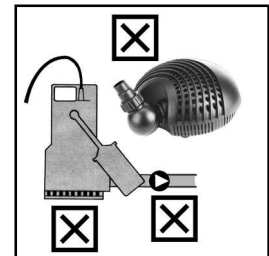
DON'T position return pipes below water - this gives poor aeration and can cause under-pressure in the filter ➤ pages 20, 21

Some venturi return devices restrict flow rates and are not particularly energy efficient. Cascades and air-pumps are recommended alternatives, or use the filter's integral venturi (➤ pages 14, 42)

Pumps & Strainers (➤ pages 18 - 20, & 45)



DO use a reliable pump of suitable flow and pressure.
DO use a pump with either an integral strainer (≤ 1.5 mm gauge) or an alternative pre-filter e.g. In-line coarse filter, Sieve unit, or Skimmerbox with coarse strainer, or an easily cleaned vortex/settlement/brush chamber (pages 45-6)



DON'T use solids handling pumps without an additional strainer ➤ page 20
DON'T use high-pressure (over 10m head) pumps without a pressure release bypass ➤ page 48
DON'T use pumps with a head of over 12m, even if a bypass is fitted ➤ pages 18, 48
DON'T use additional footvalves on the pump ➤ page 21

Using the Filter

➤ Carry out a 'wet run' before adding the bead media ➤ pages 13 & 22

WHEN STARTING FOR THE FIRST TIME WITH BEADS:



DO carry out a **trial backwash**



DO note the time taken for the procedure,
- this gives a guide to how long a typical backwash lasts



DO listen to the backwash operation,
- this gives a guide to how the unit sounds when operating correctly

RUNNING - IN ➤ pages 25 to 27



All filters take time to mature
DO use filter maturing agents or active media to seed the filter.
DO monitor water quality (ammonia; nitrite; nitrate; pH etc.)



DO carry out regular backwashes once the filter has fully matured ➤ page 27 to 29
Regular backwashing can eliminate most water quality and filter clogging problems before they occur



DON'T backwash too frequently during the maturing period. ➤ page 27



DON'T overstock ponds during the maturing phase

Automatic Backwashing

Fit a timer to your pump to allow automatic backwashing



DO use a **suitable timer** for the pump rating
➤ page 29



DO consider fitting an **auto top-up** to your system
➤ page 30

DO **schedule backwashes** to occur at times when you can monitor the process ➤ page 30



DO ensure that your sump/drain can cope with the waste water



DON'T schedule backwashes during main feeding/viewing times ➤ pages 28 & 41

Maintenance

The filter is a low maintenance item

– NO filter is ZERO maintenance !

For proper function carry out regular backwashes. Carry out the additional series of backwashes at least **once per month**, this should only take a few minutes ➤ pages 28 & 30

If fitted, use the additional sediment drain as directed ➤ page 32



DON'T FORGET to maintain your pump strainer (or Pre-filter device) as well



Winter Running

The cold can chill the water and your fish, and ice can damage your filter system
➤ see page 33

Monitoring your fish & water quality

Being aware of warning signs stops small problems from developing in to major ones.



If the fish behave unusually -
DO check the water quality



Troubleshooting

? If the water quality is not correct, check the Troubleshooting Guide ➤ starting on page 36

? If the filter system doesn't appear to be functioning correctly e.g.
- the backwash takes longer than normal, or doesn't start properly
- the filter sounds different during the backwash
check the Filter Troubleshooting Guide ➤ starting on page 39

For further details:

Check your User's Guide; Check with your dealer; Check the FAQ's on the website:

www.bubblebeadfilters.co.uk

If you are still having problems

- contact the UK distributor Aquatica International Tel: 020 8669 6643

info@bubblebeadfilters.co.uk