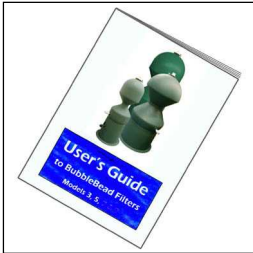
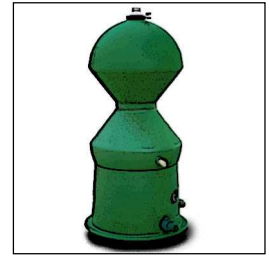


BubbleBead Filter

Quick Reference Guide

Models 1.5M, 3M, 5M, 7M, 9M with Manual Valve

Congratulations on the purchase of your BubbleBead Filter which is designed to give you optimal clarity and health in your pond system. The filter is straightforward to use but care is required during the installation procedure for the correct operation of the filter and the best overall results.



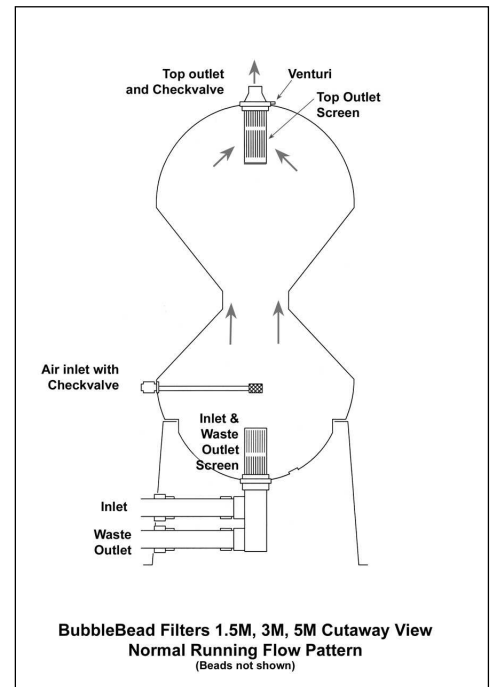
This quick reference guide is not intended to replace your **User's Guide** which carries full details on the installation and operation of your filter. It is important that you refer to this when necessary. In this quick guide the ➤ symbol directs you to the appropriate pages in the full **User's Guide**

Getting Started

This diagram shows the various parts of a typical BubbleBead Filter (Manual Valve Range). The exact shape will vary between models.

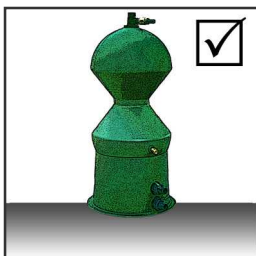
Check that all the necessary parts (➤ page 7) have been received before continuing.

➤ See pages 6 and 23 in your **User's Guide** for a full outline of how the filter system works in normal use.

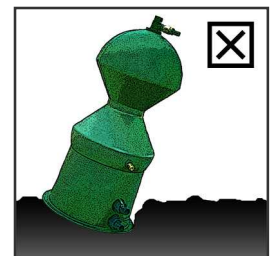


Siting the Filter

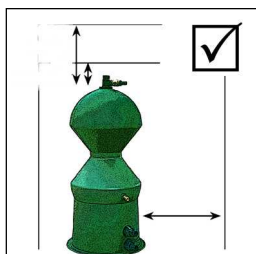
➤ see pages 4 & 5 in the User's Guide



DO mount the filter on a firm, level base



DON'T mount on soft, unstable or unlevelled ground

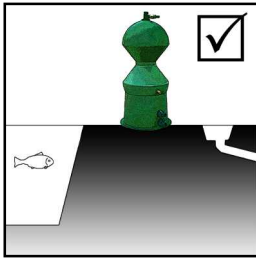


DO leave some access space for maintaining the filter



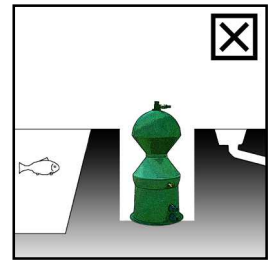
DON'T fit the filter where future access will be difficult or impossible

Siting the Filter (cont.)



DO mount the filter above pond level and wherever possible, above drains/soakaways.

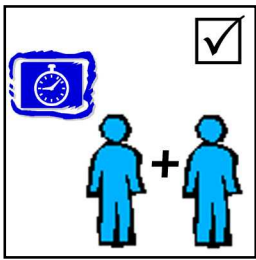
DON'T bury the filter.
N.B. If positioned below adjacent pond level, see the additional requirements noted on page 38.
Don't position below drains unless unavoidable.



Where siting below drains is necessary, ➤ see page 4

Assembling the Filter

➤ The steps to assembling your filter are described on pages 7 to 17 in your User's Guide

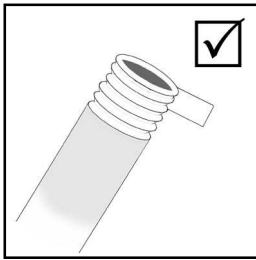


DO allow sufficient time and do get assistance to move the filter

DON'T rush the assembly, or parts could become damaged, and don't attempt to lift heavier items on your own

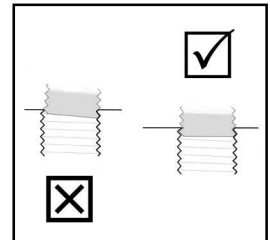


General Plumbing



DO use sufficient PTFE tape on all threads
DO initially tighten fittings only by hand to ensure that threads are not damaged, and only tighten further by hand, or using a soft belt wrench, or using a tool on the hexagon section

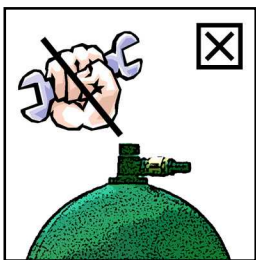
DON'T cross-thread the fittings



DO position the male fittings evenly in the holes, square-on and not at an angle.
Turn anti-clockwise one turn to settle into place before screwing into position.

➤ See plumbing tips on pages 9, 10 & 18.

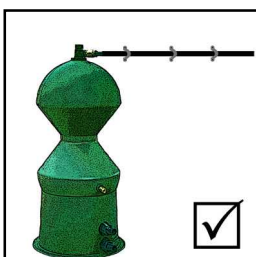
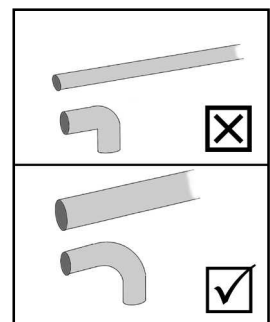
Inlet and Outlet Plumbing



DON'T over-tighten the fittings
DON'T use levers to tighten fittings - you could crack them!

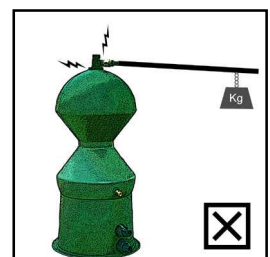
DON'T use narrow pipes and avoid tight bends and outlet restrictions (➤ page 44)
DO use swept bends, large bore hose and pipe
DO give PVC glue ample time to set

TIP: 1 1/2" hose allows over two and a half times the flow of 1" hose



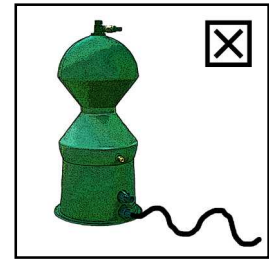
DO support pipework - use clips to hold pipes in place against walls etc.

DON'T allow pipework to put strain on the filter

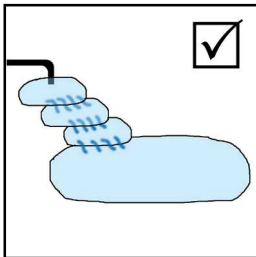




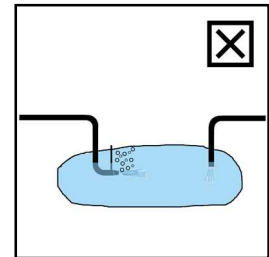
DO use straight, large bore pipework on the waste outlet



DON'T use undulating or narrow pipes



DO encourage aeration
- feed return water down cascades
- use an air-pump to feed airstones in the pond (but keep airstones away from the filter intake).



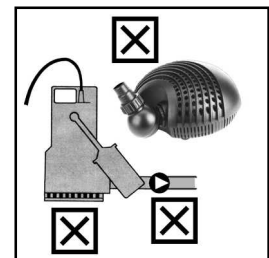
DON'T position return pipes below water - this gives poor aeration and can cause under-pressure in the filter ➤ pages 21, 22

Some venturi return devices restrict flow rates and are not particularly energy efficient. Cascades and air-pumps are recommended alternatives, or use the filter's integral venturi (➤ pages 15, 37)

Pumps & Strainers (➤ pages 19 - 21, & 44)



DO use a reliable pump of suitable flow and pressure.
DO use a pump with either an integral strainer (≤ 1.5 mm gauge) or an alternative pre-filter e.g. In-line coarse filter, Sieve unit, or Skimmerbox with coarse strainer, or an easily cleaned vortex/settlement/brush chamber (pages 41-42)



DON'T use solids handling pumps without an additional strainer ➤ page 21
DON'T use high-pressure (over 10m head) pumps without a pressure release ➤ pages 19, 44
DON'T use pumps with over 12m head, even if a bypass is fitted ➤ pages 19, 44
DON'T use additional footvalves on the pump if fitting a hydraulic valve upgrade in future

Using the Filter

➤ Carry out a 'wet run' before adding the bead media ➤ page 23

WHEN STARTING FOR THE FIRST TIME WITH BEADS:



DO carry out a **trial backwash**



DO note the time taken for the procedure,
- this gives a guide to how long a typical backwash lasts



DO listen to the backwash operation,
- this gives a guide to how the unit sounds when operating correctly

RUNNING - IN ➤ pages 25 to 27



All filters take time to mature

DO use filter maturing agents or active media to seed the filter.
DO monitor water quality (ammonia; nitrite; nitrate; pH etc.)



DO carry out regular backwashes once the filter has fully matured ➤ page 27 to 29
Regular backwashing can eliminate most water quality and filter clogging problems before they occur



DON'T backwash too frequently during the maturing period. ➤ page 27



DON'T overstock ponds during the maturing phase

DO **schedule backwashes** to occur at times when you can monitor the process ➤ page 28



DO ensure that your sump/drain can cope with the waste water



DON'T schedule backwashes during main feeding/viewing times ➤ pages 28 & 37

Automatic Backwashing

If you are planning to fit an automatic valve at a future date, make later additions more easy by checking the instructions of such kits before finalising the plumbing on your current filter.



DO consider fitting an **auto top-up** to your system
➤ page 30

Maintenance

The filter is a low maintenance item
– NO filter is ZERO maintenance !

For proper function carry out regular backwashes. Carry out the additional series of backwashes at least **once per month**, this should only take a few minutes ➤ pages 29 & 31
Use the additional sludge drain as directed ➤ page 31



DON'T FORGET to maintain your pump strainer (or Pre-filter device) as well



Winter Running

The cold can chill the water and your fish, and ice can damage your filter system
➤ see page 32

Monitoring your fish & water quality

Being aware of warning signs stops small problems from developing in to major ones.



If the fish behave unusually -
DO check the water quality



Troubleshooting

? If the water quality is not correct, check the Troubleshooting Guide ➤ starting on page 45

? If the filter system doesn't appear to be functioning correctly e.g.
- the backwash takes longer than normal, or doesn't start properly
- the filter sounds different during the backwash
check the Filter Troubleshooting Guide ➤ starting on page 35

For further details:

Check your User's Guide; Check with your dealer; Check the FAQ's on the website:

www.bubblebeadfilters.co.uk

If you are still having problems

- contact the UK distributor Aquatica International Tel: 020 8669 6643

info@bubblebeadfilters.co.uk